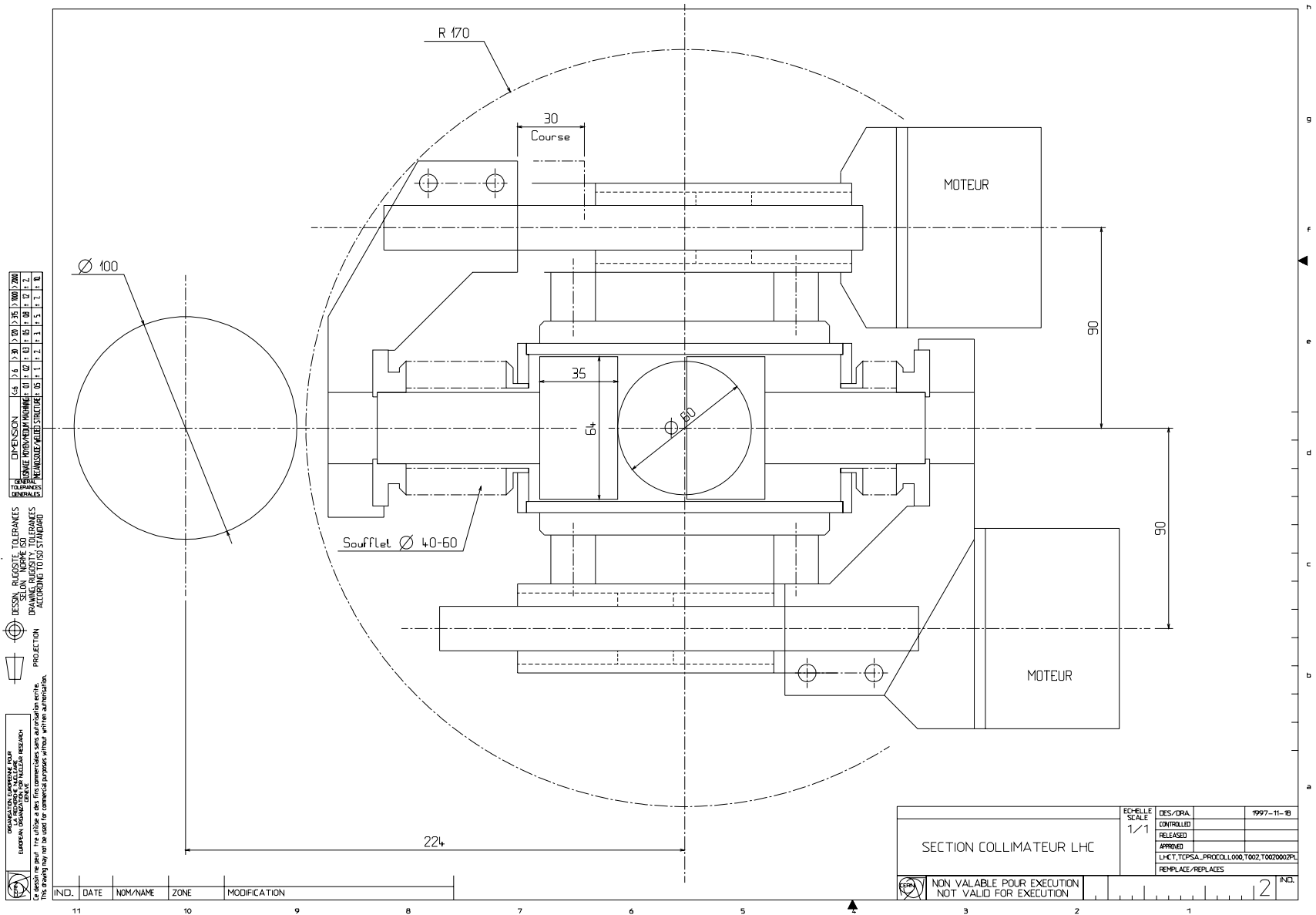


Preliminary design of collimator (transverse view). (G. Burtin SL/BI)



	DIMENSION 1/4 1/8 3/16 1/2 3/4 1 1 1/4 1 1/2 2 2 1/2 3 3 1/2 4 4 1/2 5 5 1/2 6	
	PRECISION ± 0.05 ± 0.03 ± 0.02 ± 0.015 ± 0.01 ± 0.008 ± 0.005 ± 0.003 ± 0.002	

FINISH, SURFACES, TOLERANCES
 SECON TO
 FINISHES TO BE USED FOR CONSTRUCTION
 ACCORDING TO ISO STANDARDS

PROJECTION
 FIRST ANGLE

DIMENSIONS IN MILLIMETERS
 UNLESS OTHERWISE SPECIFIED
 DIMENSIONS ARE TO BE USED FOR CONSTRUCTION UNLESS OTHERWISE SPECIFIED

IND.	DATE	NOM/NAME	ZONE	MODIFICATION
11			10	
10			9	
9			8	
8			7	
7			6	
6			5	
5			4	
4			3	
3			2	
2			1	

NON VALABLE POUR EXECUTION NOT VALID FOR EXECUTION	SECTION COLLIMATEUR LHC		ECHELLE SCALE 1/1		DES/ORA 1997-11-19
	CONTROLLED		RELEASED		
	APPROVED		REPLACE/REPLACES		
	LHC.T.CPSA.PROCOLL.000.T002.T002000.PL				

IND. 2