



# Plans for dose studies

---

8<sup>th</sup> meeting of the  
LHC Beam Cleaning Study Group  
February 20, 2002



# "To Do" List

---

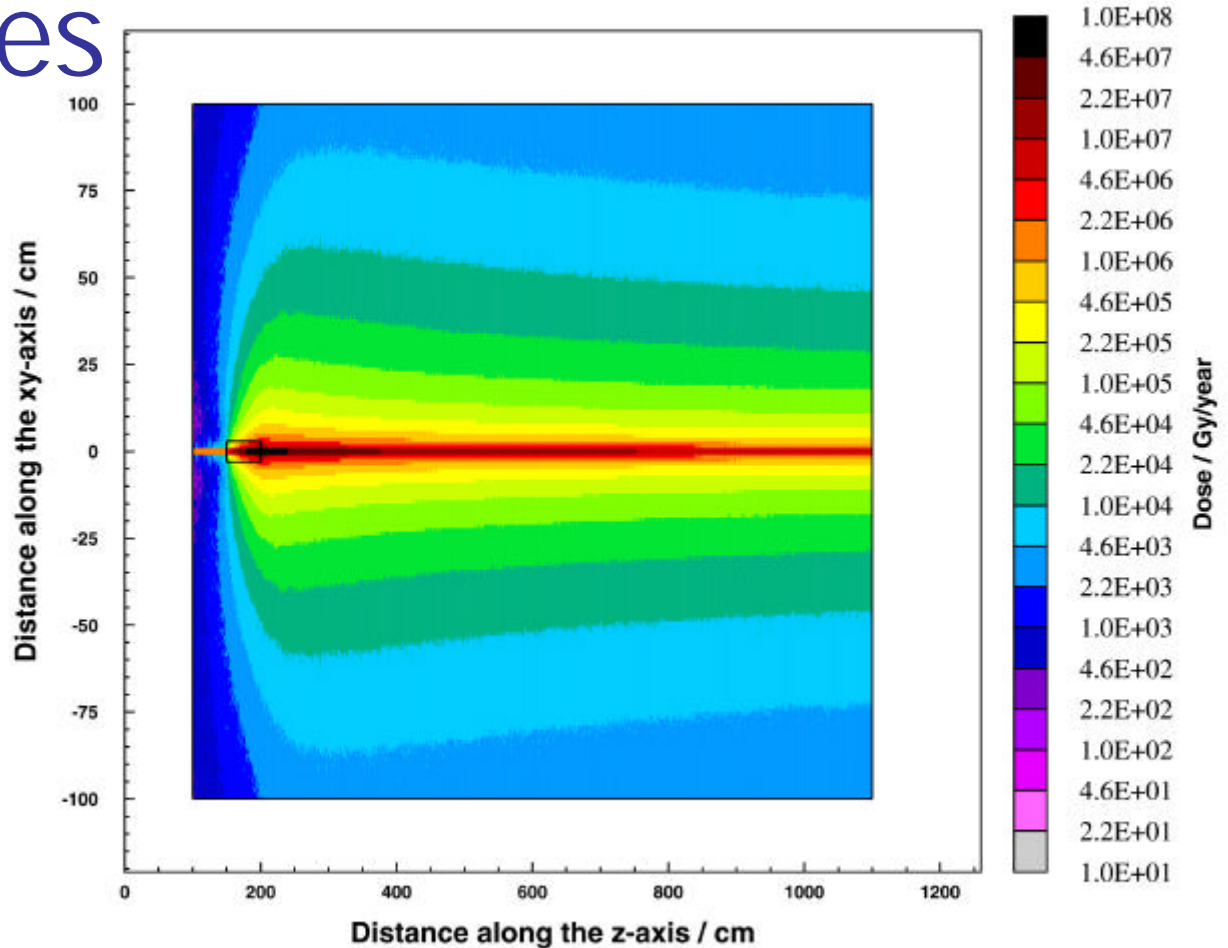
- Small Simulations
  - What kind of configuration is needed?
  - Dose to Components
  - Activation
- Different Material Choices
- Implementation of the particle distribution inside the collimators

# Examples

## Boron Nitride

Dose according to:  
10E9 part/s  
accumulated over  
one year of LHC  
operation

Simulated Dose After One Year Of Operation  
(BN\_HP Target)

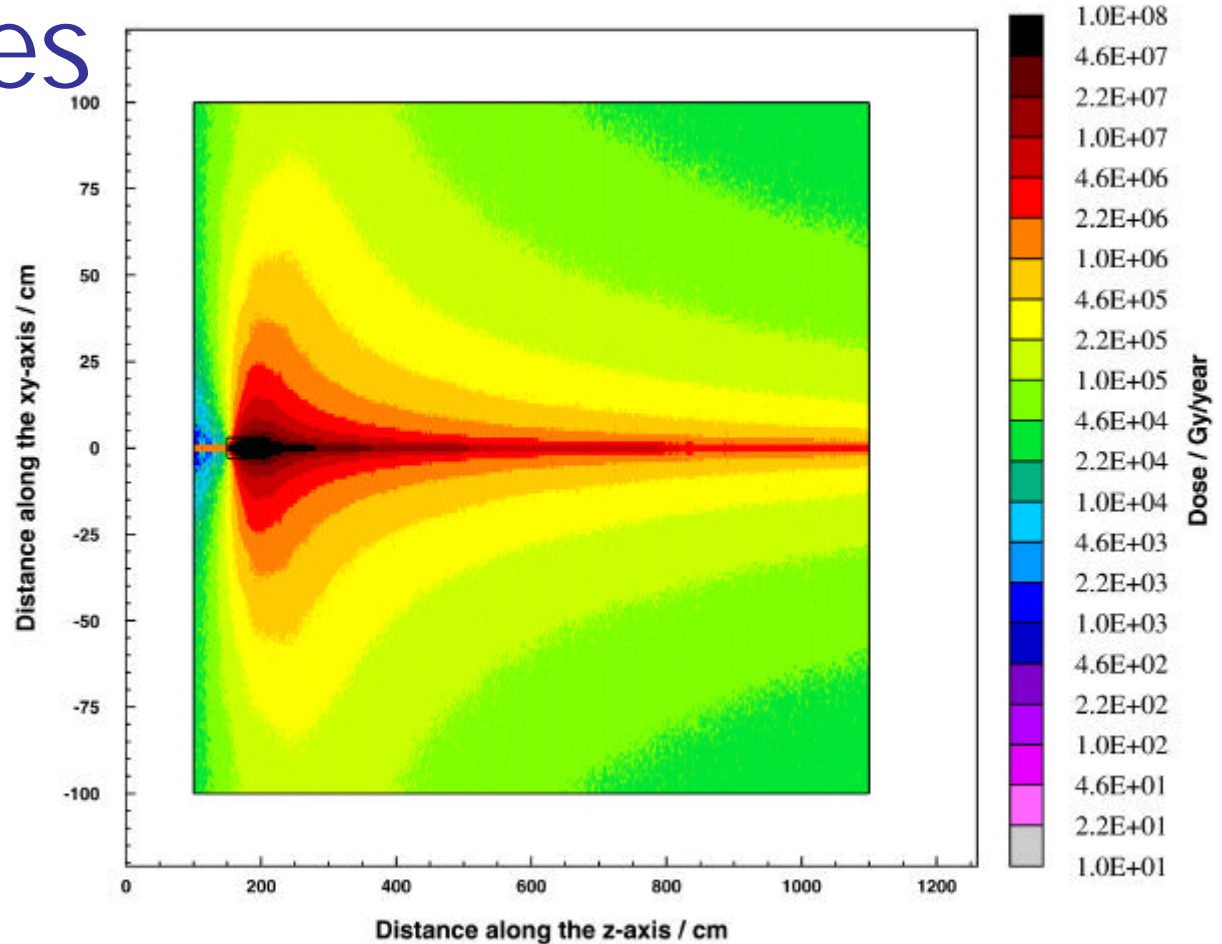


Simulated Dose After One Year Of Operation (Cu Target)

# Examples

## Copper

Dose according to:  
10E9 part/s  
accumulated over  
one year of LHC  
operation



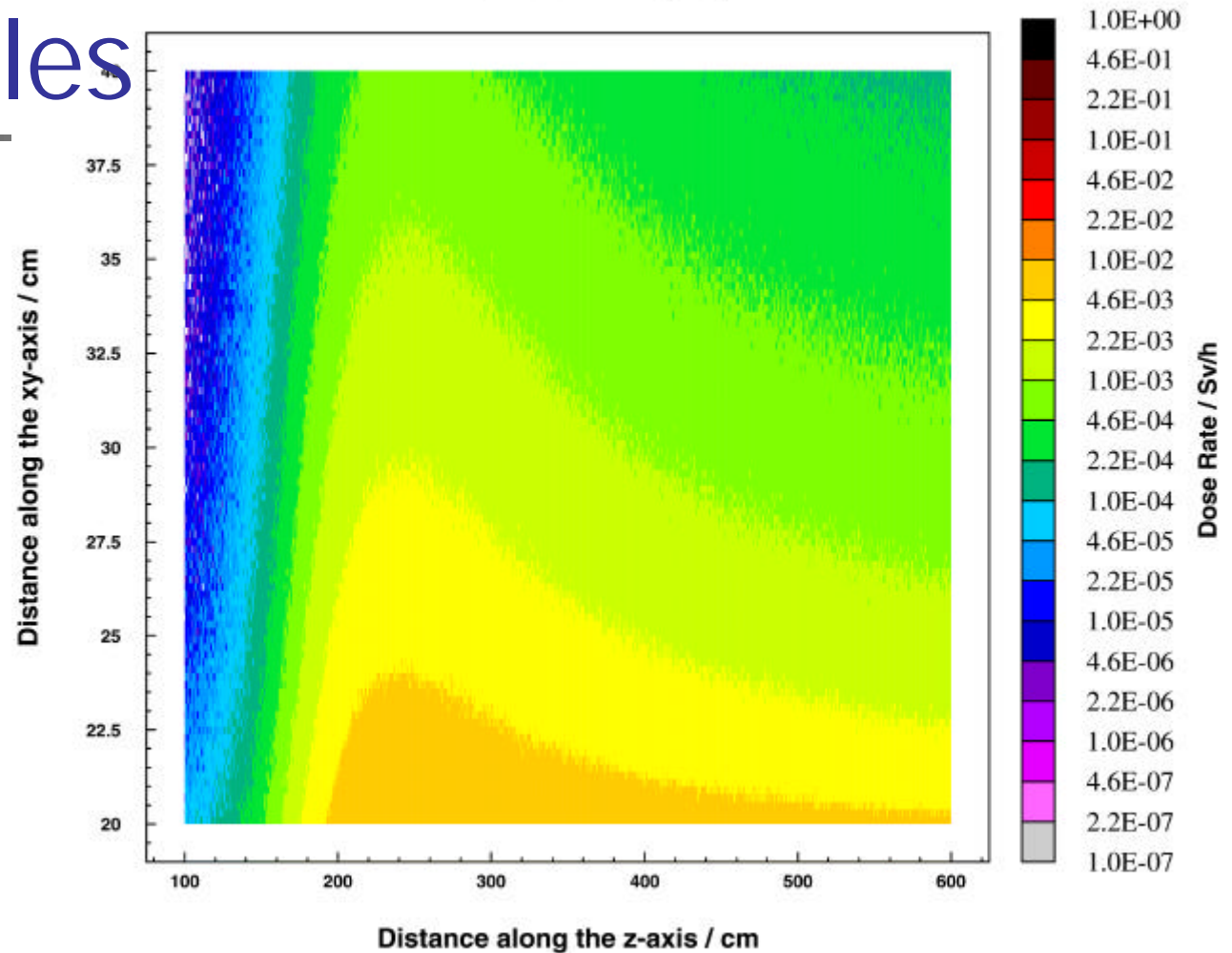
## Simulated Induced Activity After One Year Of Operation (BN\_HP Target)

# Examples

## Boron Nitride

Induced Activity  
according to:

10E9 part/s  
accumulated over  
one year of LHC  
operation



## Simulated Induced Activity After One Year Of Operation (Cu Target)

# Examples

## Copper

Induced Activity  
according to:

10E9 part/s  
accumulated over  
one year of LHC  
operation

